

PATENTS:

2023 3035 2725.7

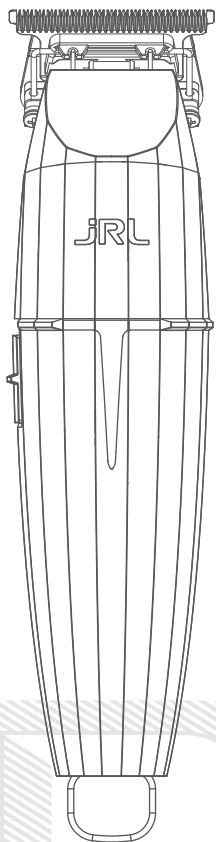
2023 1168 3285.9

2023 2335 0574.5

2020 2310 2170.0

2022 2353 3128.3

2020 3024 4731.7



ONYX

FF 2020T-B

Professional Cordless Hair Trimmer

USER'S MANUAL

Tips

1. This product is designed for professional use only. This machine is not designed to be used on synthetic hair or for any other purpose other than cutting 100% human hair.
2. The company will not take responsibility for malfunctions or damages caused by misuse.

Safety precautions

Keep Away from Children:

Please store trimmer away from children.

Trimmer contains sharp blades and small parts that can be harmful to minors.

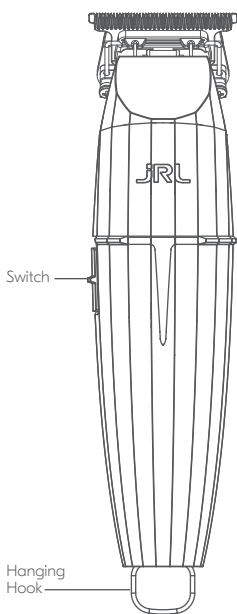
Safety Use:

1. This appliance can be used by children aged from 8 years and above and persons with reduced physical, sensory or mental capabilities or lack of experience and knowledge if they have been given supervision or instruction concerning use of the appliance in a safe way and understand the hazards involved.
2. This appliance is not intended for use by persons (including children) with reduced physical, sensory or mental capabilities, or lack of experience and knowledge, unless they have been given supervision or instruction concerning use of the appliance by a person responsible for their safety.
3. Children shall not play with the appliance.
4. Cleaning and user maintenance shall not be made by children without supervision.
5. The appliance is only to be used with the power supply unit provided with the appliance.
6. **WARNING:** Keep the appliance dry.
7. This appliance contains batteries that are non-replaceable.
8. Unplug the power adapter before cleaning the trimmer.
9. Remove the blade first, then use cleaning brush to remove any hair buildup.
10. Keep away from water in order to avoid shock or damage to the trimmer.
11. If the trimmer is accidentally dropped into water or any other chemicals, discard immediately. Do not try to dry it and plug it into a power source.
12. To properly store, remove trimmer from dock, unplug adapter, and thoroughly clean your unit. Do not store the trimmer on the charging dock or leave it attached to the adapter.
13. If the cord on the power adapter is damaged, stop using it immediately and replace right away.
14. Do not disassemble this product on your own. Visit authorized dealers for service and repair.
15. Choose the correct voltage socket before charging (AC100-240V 50/60Hz).
16. Please do not twist, disassemble or puncture the rechargeable battery within the trimmer, otherwise it may cause a short circuit or burn the machine. If the battery is not working, do not run the trimmer and take it to an authorized dealer.
17. Extended use in temperatures below -10°C or above 40°C is not recommended as it may damage the battery.

To Avoid Product Damage:

1. Only use original accessories.
2. Do not sharpen the blade on your own.
3. **WARNING:** For the purposes of recharging the battery, only use the detachable supply unit provided with this appliance.

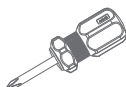
Product overview



Trimmer



Blade Adjustment Tool



Screwdriver



Blade Protector



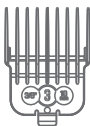
Cleaning Brush



Lubricating Oil



Charger Adapter



Combs x5



Charging Dock

Product specifications

Product code: 2020T-B			
Item	Specifications	Item	Specifications
Power adapter	Input AC 100-240V 50/60Hz	Type of battery	Lithium ion battery
	Output DC 5V 2A	Charging time	1.5 hours
Battery capacity	3.7V 2000mAh	Usage time	3.5 hours

How to charge your trimmer

Important: Use only original power cord to charge.

You can charge your unit on the portable charging base, or charge the trimmer directly by plugging the power cord to the trimmer itself.



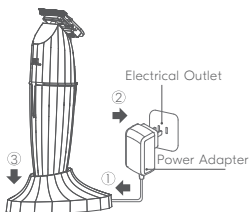
Note: When the trimmer is low on charge, the adapter can be plugged onto the trimmer directly. You may use the trimmer while it is charging.

LED functions

When the trimmer has less than 10 minutes of usable time, the **JRL** warning light flashes in red.

When the trimmer has more than 10 minutes of usable time, the **JRL** warning light flashes in white.

When the trimmer is fully charged, the warning light will stop flashing and the white **JRL** light will remain on.



How to operate

Switching and shifting instructions

Push the switch to turn the trimmer on and off.

O: Shut down

I: Power on, 8200 RPM

Trimmer Status indication by LED light

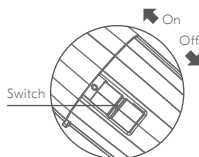
The JRL LED light shows the usable time of the trimmer in the current speed setting.

When the trimmer is in high power mode, the **JRL** white light is on.

When the trimmer is in medium power mode, the **JRL** red light is on.

When the trimmer battery is low, the **JRL** red light will flash.

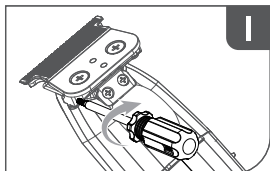
Trimmer will automatically shut down/off when battery is dead.



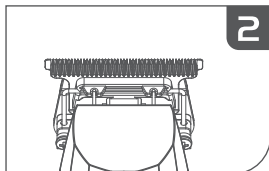
How to adjust cutting length to 0 mm



WARNING: Before operating, please make sure the trimmer is turned off. After the blade is installed, be sure to carefully check whether the corresponding parts have been firmly attached. Do not try to sharpen or alter the blade by yourself to avoid damaging your trimmer.



Adjust the blade with the blade adjustment tool.



Check that upper and lower blades are centered and parallel.

Blade maintenance

Note:

1. Please read the blade maintenance instructions carefully before operating. Follow the instructions when removing and installing the blade to avoid improper assembly.
2. After the blade is installed, be sure to carefully check whether the corresponding parts have been firmly attached.
3. Before operating, please unplug the power adapter and turn off the trimmer.
4. When handling the blade, do not try to sharpen or alter the blade by yourself to avoid damaging your trimmer.

Removing your blade

As seen in Figure 1, hold the bottom blade with your fingers to avoid the blade from moving. Loosen the screws and remove the blade. Make sure you hold the blade and the trimmer when disassembling to prevent parts from falling and getting damaged.

Installing your blade

As shown in Figure 2, align the screw slots corresponding to the blade and main unit of trimmer. Tighten the screws. Then the installation of the blade is complete.

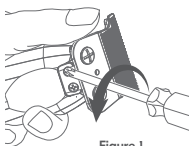


Figure 1

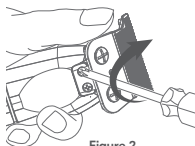


Figure 2

Blade cleaning and maintenance

Figure 3: Use a brush to clean the main unit & the hair debris on the blade.

Figure 4: Drop 1-2 drops of lubricant oil to the corresponding five areas.

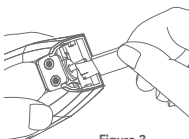


Figure 3

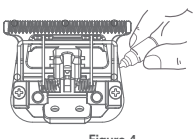
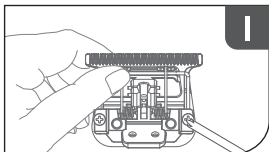
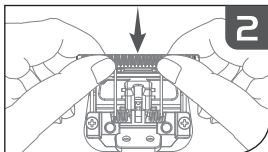


Figure 4

How to reset the blade

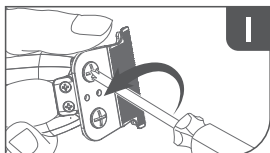


Loosen the screws shown, and remove the blade (Caution: the blade is very sharp, pay attention to protect your hands).

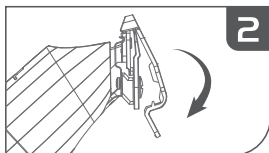


Hold the upper blade and push it down to reset it, then tighten the screws and adjust the gap as you need.

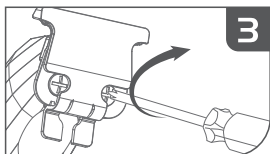
Trimmer blade adjustment instructions (altering blade for closer cut)



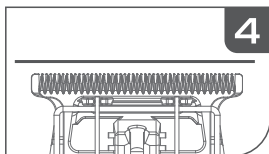
Loosen the screws 180 degrees



Install blade adjustment tool (protector)



Tighten the screws



Ensure blades are properly aligned

How to install and replace guards

Trimmer comes with 5 guards.

Sizes are: 1/2# (1.5 mm), 1# (3 mm), 2# (6 mm), 2-1/2# (8 mm), 3#(10 mm)

Installing your guard:

As shown in the figure below, align the card slot corresponding to the guard with the main unit of the trimmer, and then lift the main unit gently until you hear a 'click', which indicates the installation of the guard is complete.



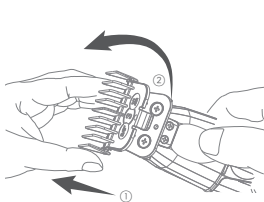
WARNING:

Before replacing guard, make sure the trimmer is turned off.

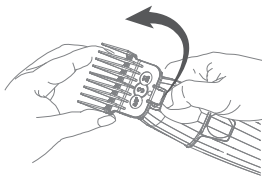
Make sure the guard is installed properly, and is not loose before use.

Removing your guard:

As shown below, you can remove the guard by turning the tail of the comb with your finger.



Guard installation



Guard removal

Warranty

1. Under normal conditions of proper use and maintenance of the product, the warranty period of the product is 1 year.
2. Expendable parts, such as blades, guards, lubricants, cleaning brushes, etc., are not under the terms of the warranty.
3. The following conditions are not covered by the warranty service:
 - Failure to show a valid warranty card, or the information on the warranty card is inconsistent with the actual product.
 - Trimmers with alterations will not be covered by the warranty service.
 - Proof of purchase must be included with warranty card.
 - Failure to follow the instructions in the instruction manual to operate and maintain the trimmer, causing it to malfunction or damage it by dropping the trimmer, immersing the trimmer in water and physical alterations of any kind will void the warranty service.
 - Product damage due to transportation or improper storage.
4. This warranty card is the only warranty certificate, please store it properly along with your proof of purchase.
5. The company will charge a maintenance fee for products without a warranty card or beyond the warranty period.
6. Please send the trimmer in need of repair or warranty directly to the designated JRL domestic service center for repair, maintenance, or replacement.

Warranty card

Customer Contact Information:

Client Name: _____ Contact Phone: _____

Address: _____

Date Purchased: _____ Exp of Warranty Period: _____

Proof of Purchase: ☐ Enclosed ☐ Not Enclosed (Warranty Automatically Voided)

Machine Serial Number: _____

Reason of Return: _____

Tips

1. Denna maskin är inte designad för att användas på syntetiskt hår eller för andra avsikter än att klippa 100% mänskligt hår
2. Företaget tar inget ansvar för fel eller skador orsakade av felanvändning.

Säkerhetsåtgärder

Håll borta från barn:

Förvara inte klippmaskinen nära barn. Klippmaskinen innehåller vassa skär och smådelar som kan vara farliga för minderåriga.

Säkerhetsanvändning:

1. Denna apparat kan användas av barn från 8 års ålder och personer med reducerade fysiska, sensoriska och mentala förmågor eller brist på erfarenhet och kunskap om de är under tillsyn eller har fått instruktioner gällande användning av apparaten på ett säkert sätt och förstår de involverade riskerna.
2. Denna apparat är inte avsedd att användas av personer (barn inkluderat) med reducerade fysiska, sensoriska och mentala förmågor, eller brist på erfarenhet och kunskap, så vida de inte är under tillsyn eller har fått instruktioner gällande användning av apparaten av en person som är ansvarig för deras säkerhet.
3. Barn ska inte leka med apparaten.
4. Rengöring och användarunderhåll ska inte utföras av barn utan tillsyn.
5. Apparaten får enbart användas med den strömförsörjningsenhet som medföljer apparaten.
6. VARNING: Håll apparaten torr.
7. Denna apparat innehåller batterier som är icke-utbytbara.
8. Koppa ur nätadaptern innan du rengör trimmern.
9. Ta bort skäret först, använd sedan rengöringsborsten för att ta bort hårrester.
10. Håll borta från vatten för att undvika stötar eller skador på trimmern.
11. Om trimmern av misstag tappas i vatten eller någon annan kemikalie, kassera omedelbart. Försök inte att torka den och anslut den inte till en strömkälla.
12. För ordentlig förvaring, ta bort trimmern från laddningsdockan, koppla ur adaptern, och rengör apparaten noggrant. Förvara inte trimmern i laddningsdockan eller lämna den ansluten till adaptern.
13. Om sladden till nätadaptern är skadad, sluta använd den omedelbart och byt ut den direkt.
14. Ta inte isär denna produkt på egen hand. Besök en auktoriserad återförsäljare för service och reparation.
15. Välj korrekt spänningsuttag innan laddning (AC100-240V 50/60Hz).
16. Försök inte att vrida, plocka isär eller punktera det uppladdningsbara batteriet som sitter inuti trimmern. Det kan orsaka kortslutning eller bränna maskinen. Om batteriet inte fungerar, kör inte trimmern och ta den till en auktoriserad återförsäljare.
17. Långvarig användning i temperaturer under -10°C eller över 40°C är inte rekommenderad eftersom det kan skada batteriet.

För att undvika skador på produkten:

1. Använd bara originaltillbehör.
2. Slipa inte skären själv.
3. VARNING: För att ladda batteriet, använd enbart original-strömadaptern som medföljer denna apparat.



**Guang Zhou Eagle
Fortress Hair Products Ltd.**

No.4 Shuanglong Yucai
Street, Shiling Town, Huadu
District, Guangzhou, 510899,
China

Bratt Trading AB

Radiövägen 34
135 48 Tyresö SWEDEN
+46 (8) 712 95 10
info@bratt-trading.se
www.bratt-trading.com



www.jrl.com



www.bratt-trading.com

